



Piano Practice

Happy Birthday Part 1

Use this music sheet to practice your piano pattern!

THE NOTES

A musical score for piano in 3/4 time, consisting of four measures. The first measure shows a bass clef with notes G, A, B, C, D. The second measure shows a treble clef with a red note G. The third measure shows a bass clef with notes G, A, B, C, D. The fourth measure shows a treble clef with notes G, A, B, C, D. Fingerings are indicated by numbers 1-3 in colored circles below the notes.

THE KEYS



3 2 1	1 2
LEFT HAND	RIGHT HAND

REMINDERS



Name: _____ Date: _____



Piano Worksheet

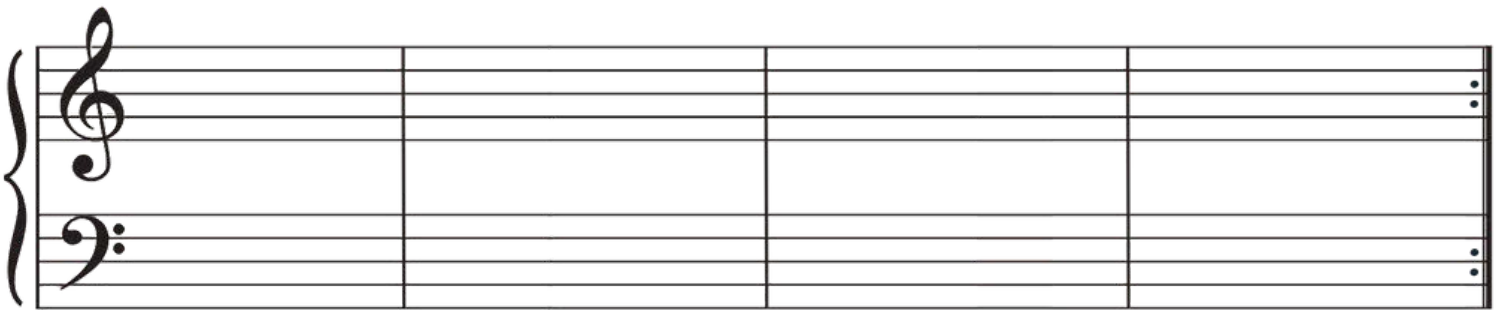
Happy Birthday Part 1

Watch the lesson before completing this worksheet.

After completing your lesson, try to draw the notes of the piano pattern you learned.

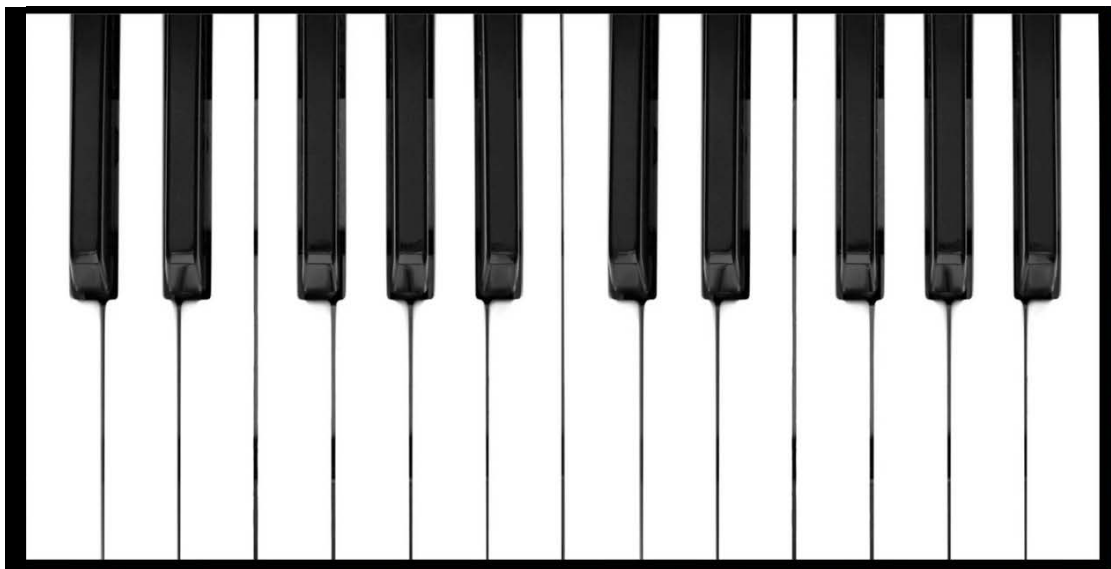
DRAW THE NOTES

Grand Staff



COLOR THE KEYS

Color the Keys that you use in this Piano Pattern.



Circle the "Time Signature 3/4"

Musical score for piano in 3/4 time. The score consists of four measures. The first measure has a whole rest in the treble clef and four eighth notes in the bass clef. The second measure has a half note in the treble clef and a half note in the bass clef. The third measure has a whole rest in the treble clef and four eighth notes in the bass clef. The fourth measure has a half note in the treble clef and a half note in the bass clef. The notes are color-coded: blue for eighth notes, pink for half notes, and red for half notes. The time signature 3/4 is written in both staves.

Circle the "Eighth Notes"

Musical score for piano in 3/4 time. The score consists of four measures. The first measure has a whole rest in the treble clef and four eighth notes in the bass clef. The second measure has a half note in the treble clef and a half note in the bass clef. The third measure has a whole rest in the treble clef and four eighth notes in the bass clef. The fourth measure has a half note in the treble clef and a half note in the bass clef. The notes are color-coded: blue for eighth notes, pink for half notes, and red for half notes. The time signature 3/4 is written in both staves.

Circle the "Half Notes"

Musical score for piano in 3/4 time. The score consists of four measures. The first measure has a whole rest in the treble clef and four eighth notes in the bass clef. The second measure has a half note in the treble clef and a half note in the bass clef. The third measure has a whole rest in the treble clef and four eighth notes in the bass clef. The fourth measure has a half note in the treble clef and a half note in the bass clef. The notes are color-coded: blue for eighth notes, pink for half notes, and red for half notes. The time signature 3/4 is written in both staves.



Piano Practice

Happy Birthday Part 2

Use this music sheet to practice your piano pattern!

THE NOTES

THE KEYS



3	2	1	1	2	3	4	5
LEFT HAND			RIGHT HAND				

REMINDERS

Name: _____ Date: _____



Piano Worksheet

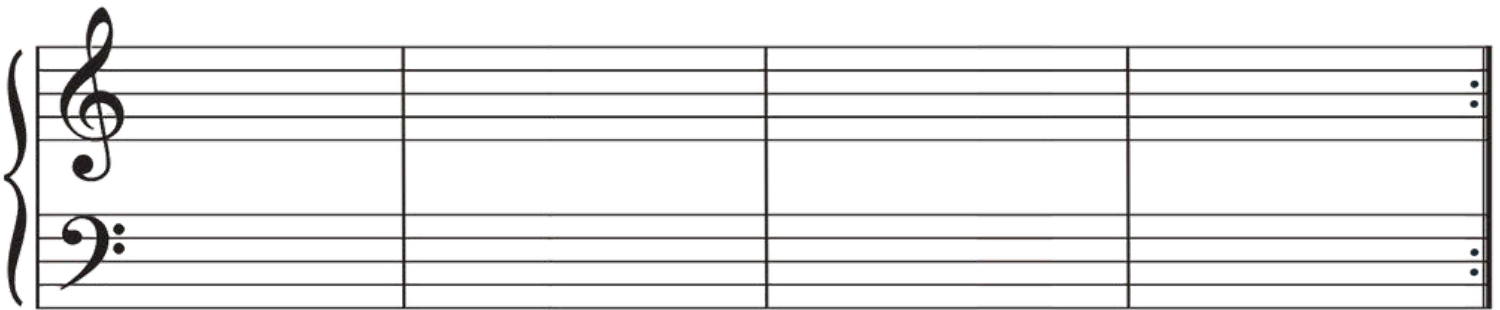
LHappy Birthday Part 2

Watch the lesson before completing this worksheet.

After completing your lesson, try to draw the notes of the piano pattern you learned.

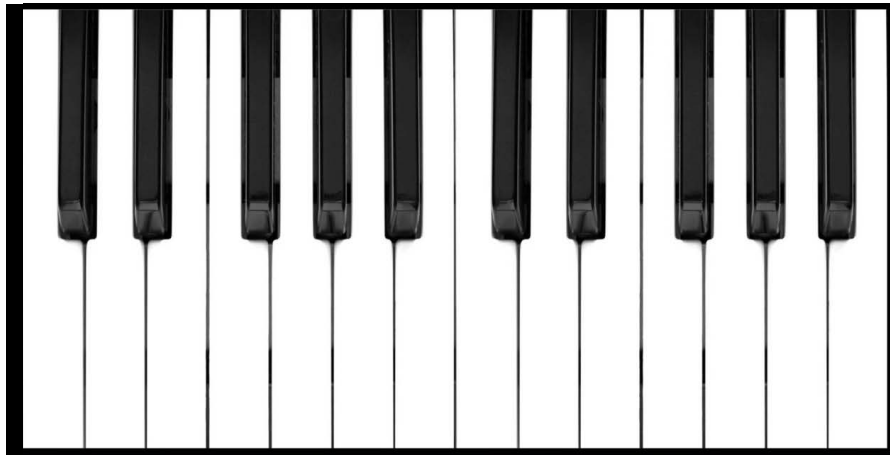
DRAW THE NOTES

Grand Staff



COLOR THE KEYS

Color the Keys that you use in this Piano Pattern.



Circle the "Time Signature 3/4"

A musical score for piano in 3/4 time, consisting of four measures. The treble clef staff contains: Measure 1: a blue quarter note (G4) and a yellow quarter note (A4); Measure 2: a red half note (F#4) and a whole rest; Measure 3: a green beamed eighth note pair (G4, A4), a yellow quarter note (B4), and a red quarter note (C5); Measure 4: an orange quarter note (D5) and a red half note (E5). The bass clef staff contains: Measure 1: two blue quarter notes (F3, G3) and a whole rest; Measure 2: a whole rest, a purple quarter note (A2), and a pink quarter note (B2); Measure 3: a whole rest; Measure 4: a whole rest.

Circle the "Eighth Notes"

A musical score for piano in 3/4 time, consisting of four measures. The treble clef staff contains: Measure 1: a blue quarter note (G4) and a yellow quarter note (A4); Measure 2: a red half note (F#4) and a whole rest; Measure 3: a green beamed eighth note pair (G4, A4), a yellow quarter note (B4), and a red quarter note (C5); Measure 4: an orange quarter note (D5) and a red half note (E5). The bass clef staff contains: Measure 1: two blue quarter notes (F3, G3) and a whole rest; Measure 2: a whole rest, a purple quarter note (A2), and a pink quarter note (B2); Measure 3: a whole rest; Measure 4: a whole rest.

Circle the "Half Note"

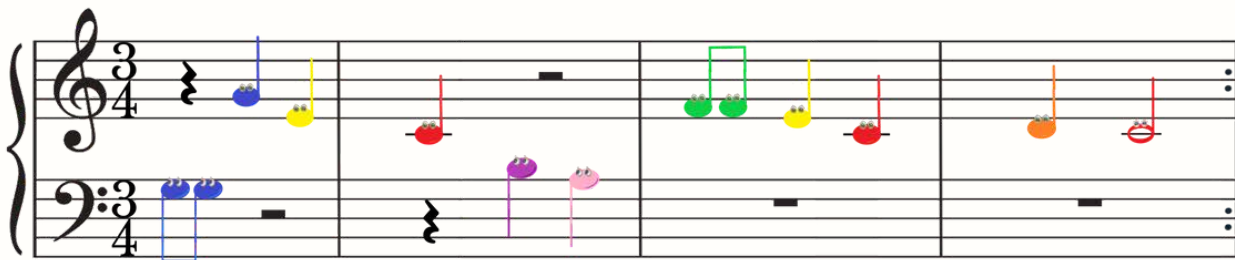
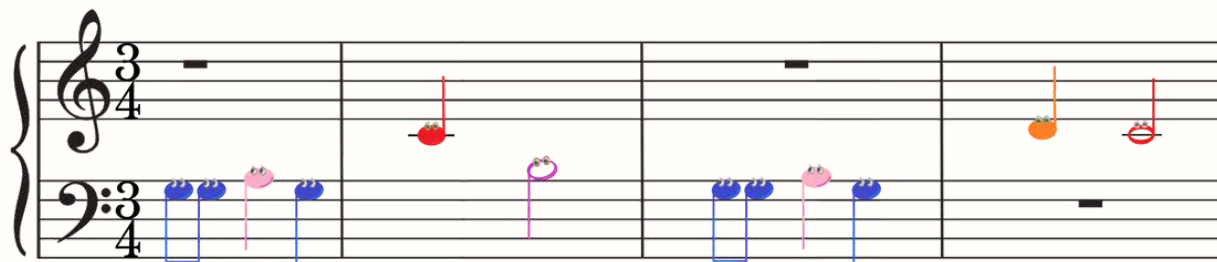
A musical score for piano in 3/4 time, consisting of four measures. The treble clef staff contains: Measure 1: a blue quarter note (G4) and a yellow quarter note (A4); Measure 2: a red half note (F#4) and a whole rest; Measure 3: a green beamed eighth note pair (G4, A4), a yellow quarter note (B4), and a red quarter note (C5); Measure 4: an orange quarter note (D5) and a red half note (E5). The bass clef staff contains: Measure 1: two blue quarter notes (F3, G3) and a whole rest; Measure 2: a whole rest, a purple quarter note (A2), and a pink quarter note (B2); Measure 3: a whole rest; Measure 4: a whole rest.



HAPPY



BIRTHDAY



www.MyMusicWorkshop.com